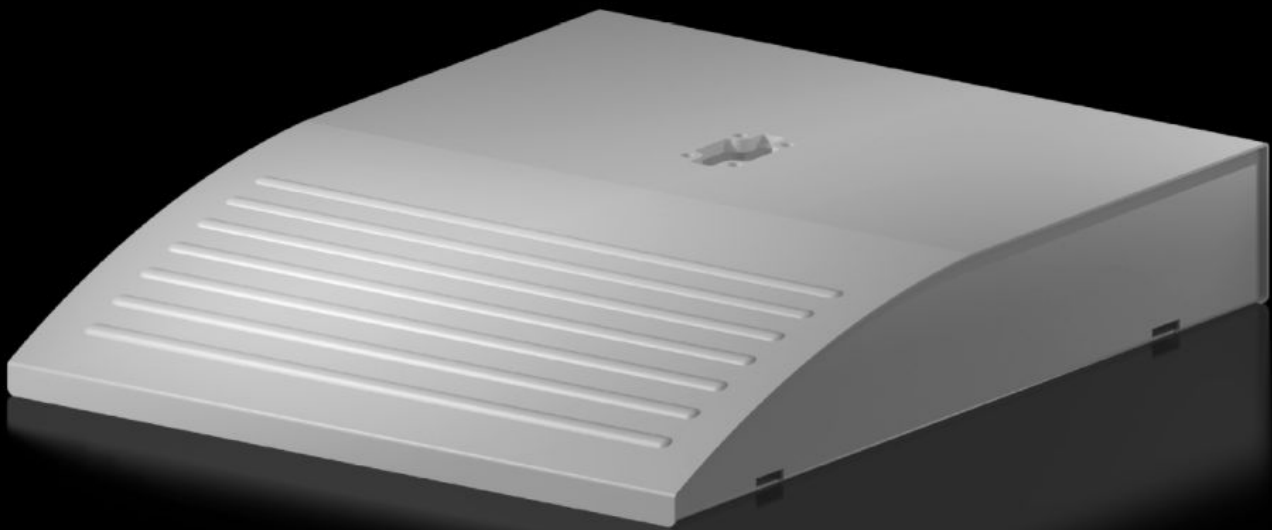


# Rittal – The System.

Faster – better – everywhere.



## CP 6106.200 Pedestal Base Plates

State: 9/22/2023 (Source: [rittal.com/us-en](http://rittal.com/us-en))

ENCLOSURES

POWER DISTRIBUTION

CLIMATE CONTROL

IT INFRASTRUCTURE

SOFTWARE & SERVICES

FRIEDHELM LOH GROUP



# CP 6106.200 - Pedestal Base Plates modular, CP 60 large

## Features

Model No.	CP 6106.200
Version	Stationary
Material	Steel
Color	RAL 7035
Supply includes	Pedestal base plate/cross member
Note	Support arm system CP 120 may also be used by simply drilling a hole. Weight capacity 50 kg
Load capacity, static	35 kg 77.2 lb.
Dimensions	Width: 490 mm Height: 100 mm Depth: 600 mm Width: 19.3 " Height: 3.94 " Depth: 23.6 "
Packaging unit	1 pc(s).
Weight/packaging unit	12.8 kg 28.2 lb.
Customs tariff number	73269098
EAN	4028177698437
ETIM 7.0	EC002535
ECLASS 8.0	27182604

## Approvals

# Approvals

---

Approvals

GOST